

S.S. Lapointe Drain Watershed Management Plan

River Raisin Institute

Final Draft Submitted: 7/25/2017

Approved: 9/25/2017

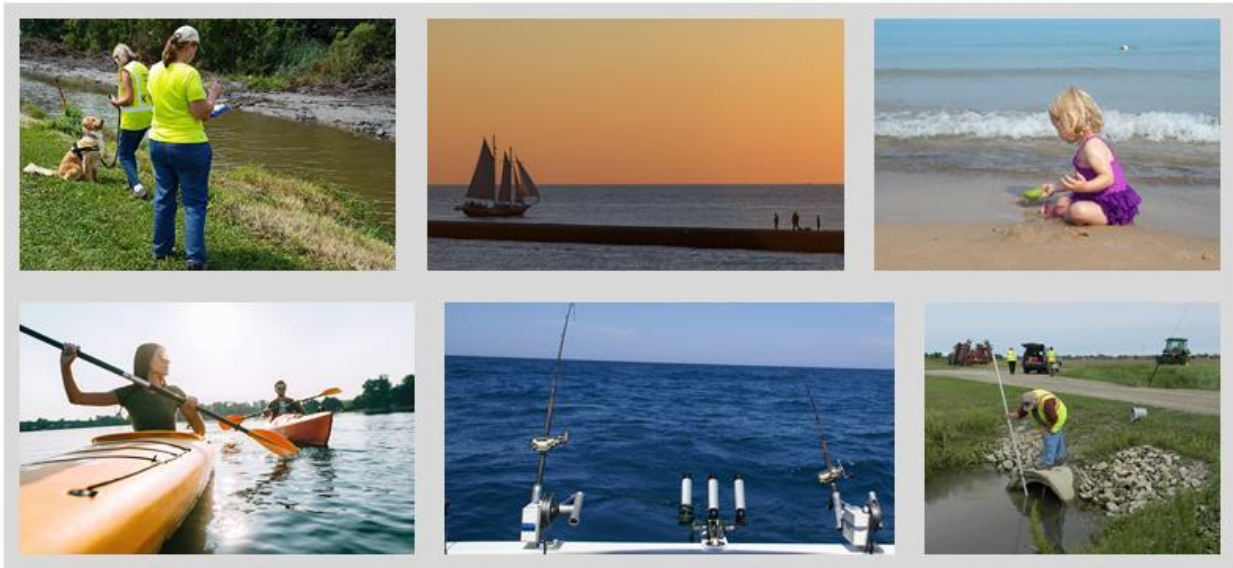


Table of Contents

| | | |
|-------|--|----|
| 1 | EXECUTIVE SUMMARY | 1 |
| 1.1 | Water Quality Concerns | 1 |
| 1.2 | Goals and Objectives | 2 |
| 1.2.1 | Develop a 319 Nine Element Approvable Plan for the S.S. Lapointe Drain Watershed | 3 |
| 1.2.2 | Establish the S.S. Lapointe Drain Watershed Management Plan Implementation Group | 3 |
| 1.2.3 | Address Identified Watershed-wide Priorities | 3 |
| 1.2.4 | Facilitate the Public Information and Education Process | 3 |
| 1.2.5 | Qualify the Watershed for Implementation Funding | 3 |
| 1.3 | Recommendations | 3 |
| 2 | INTRODUCTION | 5 |
| 2.1 | The Great Lakes and the S.S. Lapointe Drain Watershed | 5 |
| 2.2 | Purpose of the Watershed Plan | 7 |
| 2.3 | Stakeholder Participation | 7 |
| 3 | S.S. LAPOINTE DRAIN HISTORY AND CHARACTERISTICS | 9 |
| 3.1 | Lake Erie Hydrology | 14 |
| 3.2 | Luna Pier | 15 |
| 3.3 | Geology and Soils | 16 |
| 3.4 | Land Use and Growth Trends | 18 |
| 3.5 | Climate and Global Warming Implications | 20 |
| 3.6 | Hydrology | 21 |
| 3.6.1 | County Drains and Natural Watercourses | 21 |
| 3.6.2 | Lake Erie | 22 |
| 3.7 | Water Quality | 23 |
| 3.7.1 | TMDLs/303d Listings | 23 |
| 4 | CURRENT CONDITIONS | 25 |
| 4.1 | Water Quality Surveys | 25 |
| 4.1.1 | Water Quality Sampling Results | 28 |
| 4.2 | Pollutant Source Assessment | 36 |
| 4.2.1 | Stream Walk | 36 |

| | | |
|---------|--|-----|
| 4.2.2 | Source Tracking with Scent-Trained Canines | 43 |
| 4.3 | Agricultural Tillage/Cover Crop Practices Assessment | 48 |
| 4.3.1 | Data Analysis: Fall Tillage | 48 |
| 4.3.2 | Data Analysis: Spring Residue | 49 |
| 4.3.3 | Agricultural Priorities and Recommendations | 49 |
| 4.4 | Landscape Level Wetlands Functional Assessment | 54 |
| 4.4.1 | Potential Wetland Restoration Areas | 63 |
| 5 | PRIORITIZING WATERSHED ISSUES AND GOALS | 65 |
| 5.1 | Prioritization of Pollutants and Sources | 67 |
| 5.1.1 | S.S. Lapointe Drain | 67 |
| 5.1.2 | Luna Pier Beach | 69 |
| 5.2 | Pollutant Load Estimation | 72 |
| 5.2.1 | STEPL Land Use Information | 73 |
| 5.2.2 | STEPL Soils | 73 |
| 5.2.3 | STEPL Livestock Estimates | 76 |
| 5.2.4 | STEPL Septic System Information | 76 |
| 5.3 | STEPL Existing Conditions Pollutant Loads | 77 |
| 5.3.1 | Existing Conditions Scenario Results | 77 |
| 5.4 | Watershed Goals and Objectives | 79 |
| 6 | PROPOSED IMPLEMENTATION PLAN AND ACTIVITIES | 81 |
| 6.1 | Phosphorus Reduction Plan | 89 |
| 6.2 | Bacteria Reduction Plan | 100 |
| 6.3 | Public Information and Education Plan | 101 |
| 6.3.1 | Goals and Objectives of the Plan | 102 |
| 6.3.2 | Target Audiences | 103 |
| 6.3.2.1 | Target Messages and Communication Strategies | 103 |
| 6.4 | Anticipated Water Quality Benefits | 104 |
| 7 | TIMELINE AND EVALUATION | 107 |
| 8 | MILESTONES AND MONITORING | 111 |
| 9 | LONG-TERM SUSTAINABILITY | 113 |
| 10 | REFERENCES | 115 |

TABLE OF FIGURES

Figure 1 Western Lake Erie Bloom Severity 2016 1

Figure 2 S.S. Lapointe Drain Watershed Map 6

Figure 3 S.S. Lapointe Drain Assignment Unit Identification Map..... 10

Figure 4 S.S. Lapointe Drain Total Maximum Daily Load (TMDL) Reach..... 11

Figure 5 Location of water bodies, municipalities, and point sources within the lakeshore drainage watershed surrounding Luna Pier Beach 13

Figure 6 Potential illicit drain 13

Figure 7 Western Lake Erie Bloom Severity 2016 15

Figure 8 Glacial Geology of S.S. Lapointe Drain Watershed 16

Figure 9 S.S. Lapointe Drain Watershed Soils Maps 17

Figure 10 S.S. Lapointe Drain Potential Wetland Restoration Areas 19

Figure 11 Illinois and Michigan Emissions Scenarios 21

Figure 12 MODIS satellite image of Lake Erie on September 3, 2011, overlaid over map of Lake Erie tributaries..... 22

Figure 13 Water Quality Monitoring Sites and Drainage Areas..... 26

Figure 14 Phosphorus Sample Results from S.S. Lapointe Drain Water Quality Surveys (Apr - Nov 2015)28

Figure 15 Estimated Phosphorus Loads for First Four Sampling Events..... 30

Figure 16 E.coli Sample Results from S.S. Lapointe Drain Water Quality Sampling (Apr - Nov 2015)..... 31

Figure 17 E.coli for the First Four Sampling Events 32

Figure 18 Summary of Dissolved Oxygen Data 33

Figure 19 Problems Identified during the Stream Walk Assessment (October, 2015)..... 38

Figure 20 Photograph of Wells Drain, August, 2015..... 39

Figure 21 Soil Erodibility in the S.S. Lapointe Drain Watershed (NRCS data) 41

Figure 22 Stream Buffer Assessment by Field (MDEQ analysis) 42

Figure 23 Muddy Creek conditions during drain clean-out 43

Figure 24 Results of the Canine Source Tracking Survey 44

Figure 25 ECS Canine Teams at work in Luna Pier, Michigan 44

Figure 26 MDEQ Tillage Survey 50

Figure 27 Relationship between percentage of subwatershed area in conventional tillage and average measured phosphorus concentration from water quality sample 51

Figure 28 Agricultural fields without buffers that were chisel plowed in both fall of 2014 and 2015 (MDEQ)..... 52

Figure 29 Agricultural Fields with less than 30% crop residue and without stream buffers Spring, 2015 (MDEQ)..... 53

Figure 30 Approximate wetland loss pre-European Settlement to 2005 56

Figure 31 Nutrient Transformation Pre- European Settlement vs. 2005..... 57

Figure 32 S.S. Lapointe Drain Watershed Pathogen Retention Pre- Settlement vs. 2005 58

Figure 33 S.S. Lapointe Drain Watershed Sediment & Other Particulate Retention Pre- European Settlement vs. 2005 59

Figure 34 S.S. Lapointe Drain Watershed Fish Habitat Pre-Settlement vs. 2005 60

Figure 35 S.S. Lapointe Drain Watershed Amphibian Habitat Pre-European Settlement vs. 2005..... 61

| | |
|--|-----|
| Figure 36 S.S. Lapointe Drain Potential Wetland Restoration Areas | 62 |
| Figure 37 Daily average <i>E.coli</i> concentrations (orange circles) at Luna Pier Beach and total daily rainfall for summer of 2015 | 70 |
| Figure 38 Daily average <i>E.coli</i> concentrations (orange circles) at Luna Pier Beach and total daily rainfall for summer of 2016 | 71 |
| Figure 39 S.S. Lapointe Drain Watershed Hydrologic Soil Group Classifications..... | 75 |
| Figure 40 Agricultural Field Improvements | 82 |
| Figure 41 Geographic Priorities for Luna Pier Beach | 82 |
| Figure 42 Geographic Prioritization of Improvement Projects in the S.S. Lapointe Drain Watershed..... | 83 |
| Figure 43 Comparison of Various TSS Load Reduction Scenarios for Cropland in S.S. Lapointe Drain Watershed..... | 105 |
| Figure 44 Comparison of Various TP Load Reduction Scenarios for Cropland in S.S. Lapointe Drain Watershed..... | 105 |
| Figure 45 Adaptive Management Process for Michigan’s Domestic Action Plan for Lake Erie | 108 |

TABLE OF TABLES

| | |
|--|-----|
| Table 1 Point Sources in S.S. Lapointe Drain Watershed..... | 12 |
| Table 2 Breakdown of S.S. Lapointe Drain Watershed Soil Texture Class | 17 |
| Table 3 City of Luna Pier Beach, Lake Erie AUID 041000010202-01..... | 24 |
| Table 4 S.S. Lapointe Drain AUID 041000010201-02..... | 24 |
| Table 5 S.S. Lapointe Drain and Luna Pier Beach Water Quality Standards and TMDL Load Reduction Requirements..... | 25 |
| Table 6 S.S. Lapointe Drain Water Quality Sampling Sites..... | 27 |
| Table 7 Water Quality Sampling Dates and Associated Precipitation Totals..... | 28 |
| Table 8 Sampling Station Drainage Areas | 28 |
| Table 9 Summary of Collected Water Quality Data (Stations 1-6; Exceedances of Water Quality Standards highlighted) | 34 |
| Table 10 Summary of Collected Water Quality Data (Stations 7-12; Exceedances of Water Quality Standards highlighted) | 35 |
| Table 11 Summary of Problem Occurrences Identified During the Stream Walk Assessment. | 39 |
| Table 12 Prioritization of <i>E.coli</i> Problem Areas based on Water Quality and ECS Survey (April, 2015) Results..... | 45 |
| Table 13 MDEQ Tillage Practices Survey Results for S.S. Lapointe Drain Watershed..... | 48 |
| Table 14 MDEQ Spring Farm Field Residue Survey Results | 49 |
| Table 15 LLWFA Functional Acres Comparison (MDEQ, April 7, 2014) | 55 |
| Table 16 Comparison of Luna Pier Wastewater Treatment Plant TMDL Targets and 2015 Performance . | 67 |
| Table 17 Geographic Prioritization of Problem Areas | 69 |
| Table 18 Prioritized Pollutants and Sources for Impaired Uses in the S.S. Lapointe Drain Watershed | 71 |
| Table 19 Prioritized Sources and Causes for Impaired Uses in S.S. Lapointe Drain Watershed..... | 71 |
| Table 20 STEPL Land Use by Watershed | 73 |
| Table 21 Estimated Livestock Populations by Subwatershed..... | 76 |
| Table 22 Watershed Cropland Tillage Practices | 77 |
| Table 23 Existing Cropland Tillage Practices by Subwatershed | 78 |
| Table 24 STEPL-estimated Existing Conditions TSS loads for the entire S.S. Lapointe Drain Project Area. | 78 |
| Table 25 STEPL-estimated Existing Conditions TP loads (in pounds) for the entire S.S. Lapointe Drain Project Area | 78 |
| Table 26 S.S. Lapointe Drain Watershed Implementation Plan..... | 85 |
| Table 27 Summary of Federal Cost-Share Programs available to Landowners | 96 |
| Table 28 Summary of Phosphorus Reduction Implementation Plan..... | 99 |
| Table 29 <i>E.coli</i> Reduction Implementation Plan | 101 |
| Table 30 Target Audiences..... | 103 |
| Table 31 Comparison of Existing and Proposed Conditions TSS Loads (in pounds) and Load Reductions calculated by STEPL and listed in Table 24 of the S.S. Lapointe TMDL..... | 106 |
| Table 32 Comparison of STEPL Existing and Proposed Conditions Estimated TP Loads (in pounds) and Load Reductions calculated by STEPL and listed in Table 25 of the S.S. Lapointe Drain TMDL..... | 106 |
| Table 33 WMP Implementation Plan, Milestones and Monitoring Schedule | 108 |

Table 34 Interim Measurable Milestones 111
Table 35 Monitoring Metrics 112

APPENDICES

- A. S.S. Lapointe Drain TMDL
- B. Lake Erie Luna Pier Beach TMDL
- C. Water Quality and Canine Source Tracking Quality Assurance Project Plan
- D. Water Quality Survey and Stream Assessment Example Data Sheets
- E. Field Data Sheet Summary
- F. Canine Source Tracking Report
- G. Public Opinion Survey for S.S. Lapointe Drain Watershed
- H. S.S. Lapointe Drain Agricultural Survey
- I. Information and Education Plan
- J. Social Survey of Landowners in the S.S. Lapointe Drain Watershed Quality Assurance Project Plan

S.S. Lapointe Drain Watershed Management Plan List of Acronyms

AOC – Area of Concern
AUID – Assessment Unit Identification
BMP – Best Management Practice
BUIs – Beneficial Use Impairments
CCC – Commodity Credit Corporation
CCRP – Continuous Conservation Reserve Program
CFS – Cubic Feet per Second
CFU – Colony Forming Unit
CREP – Conservation Reserve Enhancement Program
CRP – Conservation Reserve Program
CSOs – Combined Sewer Overflows
CSP – Conservation Stewardship Program
CWA – Clean Water Act
CWMA – Cooperative Weed Management Area
DAP – State of Michigan Draft Domestic Action Plan
DO – Dissolved Oxygen
DRP – Dissolved Reactive Phosphorus
EC – Conductivity
E.coli – Escherichia Coli
ECS - Environmental Canine Services, LLC
EQIP – Environmental Quality Incentives Program
FPP – Farmland Protection Program
FSA – Farm Service Agency
FTE – Full-Time Equivalent
GIS – Geographic Information Systems
GLPW – Guardians of the Luna Pier Waterways
GPS – Global Positioning System
HSG – Hydrologic Soil Group
I/E – Information and Education
IJC – International Joint Commission
IHM – Sisters, Servants of the Immaculate Heart of Mary
LLWFA – Landscape Level Wetlands Functional Assessment
LID – Low Impact Development
LPHC – Luna Pier Harbor Club
LPWWTP – Luna Pier Wastewater Treatment Plant
L-THIA – Long Term Hydrologic Impact Analysis
MAEAP – Michigan Agriculture Environmental Assurance Program
MACDC – Michigan Association of Drain Commissioners
MCD – Monroe Conservation District
MCDC – Monroe County Drain Commission

MCHD – Monroe County Health Department
MDA – Michigan Department of Agriculture
MDEQ – Michigan Department of Environmental Quality
MDNR – Michigan Department of Natural Resources
MG/L – Milligrams per Liter
MNA – Michigan Nature Association
MLUI – Michigan Land Use Institute
MMWWTP – Monroe Metropolitan Waste Water Treatment Plant
MOWRA – Michigan Onsite Wastewater Recycling Association
NOAA – National Oceanic and Atmospheric Association
NMP – Nutrient Management Plan
NPDES – National Pollution Discharge Elimination System
NPS – Nonpoint Source Pollution
NRCS – Natural Resources Conservation Service
P – Phosphorus
PCBs – Polychlorinated Biphenyls
PEPA – Performance-based Environmental Policies for Agriculture
POCSS – Privately Owned Community Sewage Systems
POS – Point of Sale
QAPP – Quality Assurance Project Plan
RRI – River Raisin Institute
RRWC – River Raisin Watershed Council
RVLT – Raisin Valley Land Trust
SEMCOG – Southeast Michigan Council of Governments
SIDMA – Social Indicators Data Management and Analysis
SSLD – S.S. Lapointe Drain
SSCM – Site Specific Crop Management
STEPL – Spreadsheet Tool for Estimating Pollutant Load
TMDL – Total Maximum Daily Load
TNC – The Nature Conservancy
TP – Total Phosphorus
TSS – Total Suspended Solids
UM – University of Michigan
USDA – United States Department of Agriculture
USEPA – United States Environmental Protection Agency
USGCRP – United States Global Change Research Program
USGS – United States Geological Service
WCHD – Washtenaw County Health Department
WMP – Watershed Management Plan
WLEB – Western Lake Erie Basin
WQS – Water Quality Standards
WRE – Wetland Reserve Easement

WRP – Wetlands Reserve Program
WWTP – Waste Water Treatment Plant